

# FIITJEE SAMPLE PAPER – 2018

## (Big Bang Edge Test / Talent Recognition Exam)

for students presently in  
**Class 5 (Paper 1)**

Time: 3 Hours (9:30 am – 12:30 pm)

**Code** **5000**

Maximum Marks: 240

### Instructions:

**Caution:** Class, Paper, Code as given above **MUST** be correctly marked on the answer OMR sheet before attempting the paper. Wrong Class, Paper or Code will give wrong results.

- You are advised to devote 35 Minutes on Section-I, 35 Minutes on Section-II, 50 Minutes on Section-III, 30 Minutes on Section-IV and 30 Minutes on Section-V.
- This Question paper consists of 5 sections. Marking scheme is given in table below:

Section	Subject	Question no.	Marking Scheme for each question	
			correct answer	wrong answer
SECTION – I	APTITUDE	1 to 12	+3	0
		13 to 18	+4	0
SECTION – II	PHYSICS (PART-A)	19 to 22	+2	0
	CHEMISTRY (PART-B)	23 to 26	+2	0
	MATHEMATICS (PART-C)	27 to 31	+2	0
	BIOLOGY (PART-D)	32 to 36	+2	0
SECTION – III	PHYSICS (PART-A)	37 to 48	+1.5	0
	CHEMISTRY (PART-B)	49 to 60	+1.5	0
	MATHEMATICS (PART-C)	61 to 72	+1.5	0
	BIOLOGY (PART-D)	73 to 84	+1.5	0
SECTION – IV	PHYSICS (PART-A)	85 to 87	+3	0
	CHEMISTRY (PART-B)	88 to 90	+3	0
	MATHEMATICS (PART-C)	91 to 93	+3	0
	BIOLOGY (PART-D)	94 to 96	+3	0
SECTION – V	MATHEMATICS (PART-A)	97 to 102	+3	0
	MATHEMATICS (PART-B)	103 to 108	+3	0

- Answers have to be marked on the OMR sheet. The Question Paper contains blank spaces for your rough work. No additional sheets will be provided for rough work.
- Blank papers, clip boards, log tables, slide rule, calculator, cellular phones, pagers and electronic devices, in any form, are not allowed.
- Before attempting paper write your OMR Answer Sheet No., Registration Number, Name and Test Centre** in the space provided at the bottom of this sheet.
- See method of marking of bubbles at the back of cover page for question no. 103 to 108.**

**Note:** Please check this Question Paper contains all **108** questions in serial order. If not so, exchange for the correct Question Paper.

**OMR Answer Sheet No. :** \_\_\_\_\_  
**Registration Number :** \_\_\_\_\_  
**Name of the Candidate :** \_\_\_\_\_  
**Test Centre :** \_\_\_\_\_

For questions **103 to 108**

Numerical based questions single digit answer 0 to 9

**Example 1:**

If answer is 6.

Correct method:

0  1  2  3  4  5  6  7  8  9

**Example 2:**

If answer is 2.

Correct method:

0  1  2  3  4  5  6  7  8  9

SAMPLE PAPER

**Recommended Time: 35 Minutes for Section – I****Section – I****APTITUDE TEST**

This section contains **18 Multiple Choice Questions** number **1 to 18**. Each question has 4 choices (A), (B), (C) and (D), out of which **ONLY ONE** is correct.

**Directions (Q. 1 to 3):** What should come in the place of the question mark (?) in the following questions?

1.  $(8226 \div 3) \times \frac{1}{2} = ?$   
(A) 2156 (B) 1371  
(C) 1206 (D) 1202
2.  $333 \times 33 \times 3 = ?$   
(A) 32691 (B) 36297  
(C) 32679 (D) 32967
3.  $(3^?) = 27$   
(A) 2 (B) 3  
(C) 4 (D) None of these

**Directions (Q. 4 to 5):** In each of the following questions choose appropriate option from given alternatives such that the relationship defined by ':' is preserved.

4. Carrot : Vegetable :: Apple : ?  
(A) Plant (B) Fruit  
(C) Flower (D) Seed
5. Hot : Cold :: Light : ?  
(A) Dark (B) Small  
(C) Large (D) Tiny
6. Arrange the following words in alphabetical order and choose the word which comes at 3<sup>rd</sup> place.  
(A) Chops (B) Chord  
(C) Champ (D) Chopper

*Space for Rough Work*

**Directions (Q. 7 to 8):** In the following questions, you are given some letters which follow a set pattern. There are four answer choices choose the answer choice that can replace the '?' in the series?

7. C, E, G, I, ?

- (A) W  
(C) K

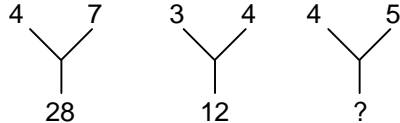
- (B) L  
(D) F

8. U, O, I, E, ?

- (A) B  
(C) G

- (B) C  
(D) A

9. Find the missing number that comes in the place of question mark (?).



- (A) 30  
(C) 20

- (B) 40  
(D) 50

**Directions (Q. 10 to 12):** In each of the following questions, which word cannot be formed by using the letter of given word.

10. TRANSFORM

- (A) TRAIN  
(C) ROAM

- (B) FORT  
(D) RANSOM

11. CONSTITUTIONAL

- (A) LOCATION  
(C) TALENT

- (B) TUTION  
(D) CONSULT

12. COURAGEOUS

- (A) COURAGE  
(C) COURSE

- (B) SOURCE  
(D) GENEROUS

---

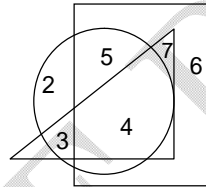
*Space for Rough Work*

**Direction (Q. 13 to 15):** Study the following statements marked as (A), (B) and (C) and answer the questions given below:

- (A) A, B, C, D and E are five boys sitting in a circle.  
 (B) C is sitting immediately to the left of E.  
 (C) A is sitting between D and E.

13. Who is sitting to the immediate left hand side of C?  
 (A) E (B) A  
 (C) B (D) D
14. Who is sitting exactly between B and A?  
 (A) C (B) E  
 (C) D (D) None of these
15. E is sitting exactly between?  
 (A) B and D (B) D and E  
 (C) B and E (D) A and C

**Directions (Q. 16 to 18):** In the given figure rectangle represents boys in a class, Triangle represents students with weight more than 50 kg wt. and Circle represents students with height more than 5 feet, now answer the following questions



16. No. of boys taller than 5 feet but less than 50 kg is  
 (A) 5 (B) 7  
 (C) 3 (D) 6
17. Number of boys more than 5 feet height and heavier than 50 kg is  
 (A) 7 (B) 6  
 (C) 4 (D) 5
18. No. of boys less than 50 kg and shorter than 5 feet is  
 (A) 5 (B) 6  
 (C) 4 (D) 2

---

**Space for Rough Work**

**Recommended Time: 35 Minutes for Section – II**

**Section – II**

**PHYSICS – (PART – A)**

---

*This part contains 4 Multiple Choice Questions number 19 to 22. Each question has 4 choices (A), (B), (C) and (D), out of which **ONLY ONE** is correct.*

---

19. The gravitational constant depends on the  
(A) Mass of the bodies  
(B) Distance between the bodies  
(C) Both (A) and (B)  
(D) None of these
20. Which of the following is an agricultural tool?  
(A) Divider  
(B) Harrow  
(C) Vice  
(D) Hammer
21. Which of the following is correct?  
(A) 1 km = 100 m  
(B) 1 cm = 10 mm  
(C) 1 mm = 10 km  
(D) 1 dm = 100 m
22. What is CGS unit of force?  
(A) Newton  
(B) Dyne  
(C) Km  
(D) Joule
- 

**Space for Rough Work**

## CHEMISTRY – (PART – B)

*This part contains 4 Multiple Choice Questions number 23 to 26. Each question has 4 choices (A), (B), (C) and (D), out of which **ONLY ONE** is correct.*

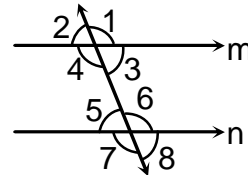
23. Which of the following gases is present in largest amount in air?  
(A) Carbon dioxide (B) Nitrogen  
(C) Oxygen (D) Argon
24. Which one of the following is an example of non-renewable resources?  
(A) Wind (B) Water  
(C) Vegetation (D) Coal and minerals
25. The water cycle in nature involves the following processes sequentially :  
(A) Evaporation, precipitation, condensation  
(B) Precipitation, condensation, evaporation  
(C) Evaporation, condensation, precipitation  
(D) Condensation, evaporation, precipitation
26. Expansion gaps are left in the railway tracks because these gaps accommodate the expansion of rails during hot weather without damaging the tracks. This process is an application of :  
(A) A physical change (B) Expansion of metals on heating  
(C) Contraction of metals on cooling (D) All of the above

**Space for Rough Work**

## MATHEMATICS – (PART – C)

This part contains 5 Multiple Choice Questions number 27 to 31. Each question has 4 choices (A), (B), (C) and (D), out of which **ONLY ONE** is correct.

27.  $1\frac{1}{4}$  is same as
- (A)  $\frac{4}{5}$  (B)  $\frac{5}{4}$   
 (C)  $\frac{3}{4}$  (D)  $\frac{1}{4}$
28. Write the sum of  $0.35 + 0.42$
- (A) 0.72 (B) 0.73  
 (C) 0.74 (D) 0.77
29. Express each of the following percents as a ratio in the simplest form  
 (i) 25%, (ii) 50%, (iii) 4%, (iv) 20%
- (A) (i) 1 : 5 (ii) 1 : 2  
 (iii) 1 : 4 (iv) 1 : 25  
 (B) (i) 1 : 2 (ii) 1 : 4  
 (iii) 1 : 25 (iv) 1 : 5  
 (C) (i) 1 : 4 (ii) 1 : 2  
 (iii) 1 : 25 (iv) 1 : 5  
 (D) (i) 1 : 35 (ii) 1 : 3  
 (iii) 1 : 4 (iv) 1 : 5
30. Cost price of an object is Rs 400 and selling price of that object is Rs 600. What is profit/loss?
- (A) profit = Rs 1000 (B) loss = Rs 200  
 (C) loss = Rs 1000 (D) Profit = Rs 200
31. In the given figure  $m \parallel n$  and angles 1 and 2 are in the ratio of 3 : 2. Find the angle 5 and 6.
- (A)  $70^\circ$  and  $110^\circ$   
 (B)  $80^\circ$  and  $100^\circ$   
 (C)  $105^\circ$  and  $75^\circ$   
 (D)  $72^\circ$  and  $108^\circ$



Space for Rough Work



## BIOLOGY – (PART – D)

This part contains 5 Multiple Choice Questions number 32 to 36. Each question has 4 choices (A), (B), (C) and (D), out of which **ONLY ONE** is correct.

32. Which is the good source of Protein?  
(A) Green vegetables (B) Rice  
(C) Fruits (D) Eggs
33. Which food item mainly provides energy?  
(A) Rice (B) Fish  
(C) Meat (D) All of these
34. Which of the following is NOT true about stems?  
(A) They transport water (B) They transport air  
(C) They transport food and nutrients (D) They hold up the plant to get sunlight
35. Birds that swim in water have  
(A) Webbed feet. (B) Clawed feet.  
(C) Long legs. (D) Short legs.
36. Penguins live in the Polar Regions. Which adaptations enable them to survive?
- |  |
|--|
| (i) They have a layer of fat under their skin.       |
| (ii) They have webbed feet.                          |
| (iii) they migrate to warmer climates during winter. |
- (A) Only (i) and (ii) (B) Only (ii) and (iii)  
(C) Only (i) and (iii) (D) (i), (ii) and (iii)

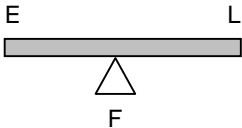
**Space for Rough Work**

## Recommended Time: 50 Minutes for Section – III

### Section – III

### PHYSICS – (PART – A)

*This part contains 12 Multiple Choice Questions number 37 to 48. Each question has 4 choices (A), (B), (C) and (D), out of which ONLY ONE is correct.*

37. What is relation between energy and power?  
 (A)  $\text{Power} = \frac{\text{Energy}}{\text{Time}}$  (B)  $\text{Power} = \text{Energy} \times \text{Time}$   
 (C)  $\text{Power} = \text{Energy}$  (D) None of these
38. Which of the following is the unit(s) of length?  
 (A) Cubit (B) Meter  
 (C) Kilometer (D) All of these
39. To break the mud rock on the surface of the soil, \_\_\_\_\_ can be used.  
 (A) Wooden plank (B) Seed drill  
 (C) Harrow (D) Both (A) and (B)
40. The force applied by waters (on an object), when it is displaced by an object, is known as \_\_\_\_\_.  
 (A) Gravitational force (B) Buoyant force  
 (C) Frictional force (D) Resisting force
41. This is an example of which class lever?  
 (A) First class lever  
 (B) Second class lever  
 (C) Third class lever  
 (D) None of these
- 
42. Which of the following force opposes relative motion?  
 (A) Friction (B) Gravitational  
 (C) Buoyant (D) All of these

*Space for Rough Work*

43. Which of the following is/are non contact forces  
(A) Gravitational (B) Magnetic  
(C) Friction (D) Both (A) and (B)
44. The weight of body is  
(A) Mass of body (B) Force of gravitation on body  
(C) Frictional force (D) None of these
45. Which of the following is used to measure weight of body?  
(A) Barometer (B) Spring balance  
(C) Hydrometer (D) Anemometer
46. \_\_\_\_\_ is the ability to do work.  
(A) Energy (B) Simple machine  
(C) Complex machine (D) Force
47. Which of the following is a complex machine?  
(A) Wheel and axle (B) Pulley  
(C) Sewing machine (D) Wedge
48. Which of the following is the renewable source of energy  
(A) Water (B) Biomass  
(C) Petrol (D) Both (A) and (B)

---

*Space for Rough Work*

## CHEMISTRY – (PART – B)

*This part contains 12 Multiple Choice Questions number 49 to 60. Each question has 4 choices (A), (B), (C) and (D), out of which ONLY ONE is correct.*

49. The shipping industry has to bear huge financial loss because of rusting of ships. The rusting of ships occur, because :
- (A) The body of ship is always in contact with water  
(B) The air around the ship is moist  
(C) Presence of salt in sea water speed up the process of rusting  
(D) All of the above
50. Water is a good \_\_\_\_\_ .
- (A) Solute (B) Solvent  
(C) Solution (D) Emulsion
51. The ocean of air surrounding the earth, is called :
- (A) Lithosphere (B) Stratosphere  
(C) Atmosphere (D) Ionosphere
52. Great loss of life and property is caused by \_\_\_\_\_ .
- (A) Natural things (B) Blocking of rivers  
(C) Natural disasters (D) Diseases
53. Sandstone and limestone are examples of \_\_\_\_\_ .
- (A) Igneous rock (B) Metamorphic rock  
(C) Sedimentary rock (D) None of these
54. Among the following, which is not a natural calamity?
- (A) Earthquake (B) Explosion  
(C) Landslide (D) Drought
55. Among the following which is liquid fuel?
- (A) Petrol (B) LPG  
(C) Coal (D) CNG

**Space for Rough Work**

56. The water fit for drinking is called :  
(A) River water (B) Rain water  
(C) Potable water (D) Ground water
57. Which among the following is a primary rock?  
(A) Sedimentary (B) Igneous  
(C) Metamorphic (D) None of the above
58. Harmful substance released by power plants occurs as :  
(A) Carbondioxide (B) Oxygen  
(C) Potassium (D) Magnesium
59. Which of the following fuels causes minimum environmental pollution?  
(A) Coal (B) Hydrogen  
(C) Diesel (D) Kerosene
60. Each kind of rock is made of :  
(A) Same minerals (B) Different minerals  
(C) Lava (D) None of these

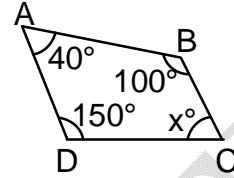
---

*Space for Rough Work*

## MATHEMATICS – (PART – C)

This part contains **12 Multiple Choice Questions** number **61 to 72**. Each question has 4 choices (A), (B), (C) and (D), out of which **ONLY ONE** is correct.

61. In the given figure ABCD is a quadrilateral. Find the value of x.
- (A) 70°  
 (B) 60°  
 (C) 50°  
 (D) 40°

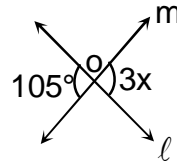


62. Find the area of rectangle, whose length is 48m and breadth is 14 m
- (A) 675 m<sup>2</sup>  
 (B) 674 m<sup>2</sup>  
 (C) 671 m<sup>2</sup>  
 (D) 672 m<sup>2</sup>
63. If  $x + 3 = 8$ , then find the value of x
- (A) 5  
 (B) 6  
 (C) 7  
 (D) 8
64. Find the numerator of the equivalent fraction of  $\frac{2}{9}$  with denominator 63.
- (A) 14  
 (B) 13  
 (C) 9  
 (D) 64
65. 1g is equal to how much kg
- (A) 0.001kg  
 (B) 0.01kg  
 (C) 0.0001 kg  
 (D) all
66. Express each of the following as a decimal
- (i) 55%, (ii) 15%
- (A) (i) 0.15, (ii) 0.55  
 (B) (i) 0.55, (ii) 0.15  
 (C) (i) 0.56, (ii) 0.68  
 (D) all

**Space for Rough Work**

67. The cost price of an object is Rs 72. It is sold at a loss of Rs 15. Find its selling price.  
 (A) SP = Rs 57 (B) SP = Rs 50  
 (C) SP = Rs 56 (D) SP = Rs 55

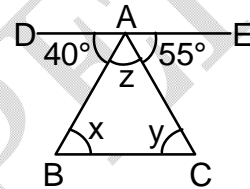
68. In the given figure  $\ell$  and  $m$  are intersecting each other at O. Find the value of  $x$ .



- (A)  $40^\circ$   
 (B)  $35^\circ$   
 (C)  $30^\circ$   
 (D)  $45^\circ$

69. In the given figure ABC is a triangle and  $DE \parallel BC$ . Find ( $x$ ,  $y$  and  $z$ ).

- (A)  $40^\circ$ ,  $55^\circ$  and  $85^\circ$   
 (B)  $55^\circ$ ,  $85^\circ$  and  $40^\circ$   
 (C)  $85^\circ$ ,  $50^\circ$  and  $45^\circ$   
 (D)  $55^\circ$ ,  $40^\circ$  and  $80^\circ$



70. Find the area of a square whose one side is 4 m  
 (A)  $16 \text{ m}^2$  (B)  $15 \text{ m}^2$   
 (C)  $17 \text{ m}^2$  (D)  $9 \text{ m}^2$

71. If  $\frac{x}{8} = 9$ , then find the value of  $x$

- (A) 72 (B) 71  
 (C) 69 (D) 68

72. If  $3(x + 6) = 21$ , then find the value of  $x$

- (A) 1 (B) 2  
 (C) 3 (D) 4

---

**Space for Rough Work**

## BIOLOGY – (PART – D)

*This part contains 12 Multiple Choice Questions number 73 to 84. Each question has 4 choices (A), (B), (C) and (D), out of which ONLY ONE is correct.*

73. Which food item has mainly fat?  
(A) Butter (B) Fish  
(C) Green vegetable (D) None of these
74. We get vitamin A from which of the following?  
(A) Liver (B) Lemon  
(C) Carrot (D) Pulses
75. Which of the following is a communicable disease?  
(A) Typhoid (B) Diabetes  
(C) Obesity (D) Heart diseases
76. Which food item has carbohydrates and fats?  
(A) Bread and butter (B) Rice and pulses  
(C) Egg and fish (D) All of these
77. What do leaves mostly do?  
(A) Make food (B) Absorb minerals  
(C) Absorb Water (D) Hold the plant in place
78. What do roots do?  
(A) Absorb water (B) Absorb Nutrients  
(C) Hold the plants in place (D) All of the above.
79. When a seed begins to sprout and leaves and a stem appear, it is called...  
(A) Germination (B) Fertilization  
(C) Photosynthesis (D) Respiration
80. What is the process in which a plant takes in carbon dioxide and releases oxygen?  
(A) Fertilization (B) Germination  
(C) Photosynthesis (D) Respiration

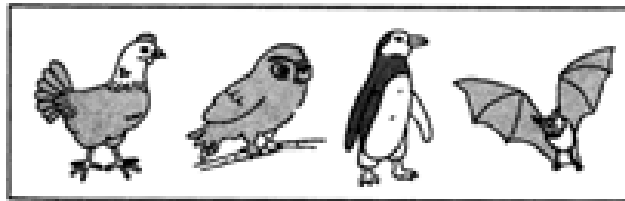
**Space for Rough Work**



81. What is the adaptation by which a grasshopper protects itself from being eaten by its predator?  
 (A) It tastes bad. (B) By the hard covering on its body  
 (C) It can camouflage itself in the grass (D) It has a poisonous sting.
82. Animals use different methods to escape from their predators. Which one of the following is NOT true?  
 (A) The lizard sheds a wriggling tail to distract the enemy.  
 (B) The grasshopper has powerful hind legs to hop away quickly.  
 (C) Crocodiles, lizards and turtles use their legs to crawl on the ground.  
 (D) A snake and a worm use their legs to crawl on the ground.
83. How are birds adapted for flight?  

(a) Their body shape
(b) Smooth waxy feathers
(c) Hollow bones
(d) Flight muscles

  
 (A) Only (a) and (b) (B) Only (c) and (d)  
 (C) Only (a), (b) and (c) (D) (a), (b), (c) and (d)
84. The bat does not belong to the same group of animals as the other three living beings because it.....



- (A) Is a carnivore (B) Can fly  
 (C) Hunts at night (D) Does not have feathers

---

*Space for Rough Work*

**Recommended Time: 30 Minutes for Section – IV**

**Section – IV**

**PHYSICS – (PART – A)**

---

*This part contains 3 Multiple Choice Questions number 85 to 87. Each question has 4 choices (A), (B), (C) and (D), out of which **ONLY ONE** is correct.*

---

85. People cleaning the garbage around us is an example of  
(A) Force (B) Work  
(C) Distance (D) None of these
86. What is S.I unit of work?  
(A) Joule (B) Newton  
(C) Dyne (D) Watt
87. What is the value of mega?  
(A)  $10^6$  (B)  $10^5$   
(C)  $10^3$  (D) 10
- 

*Space for Rough Work*

## CHEMISTRY – (PART – B)

*This part contains 3 Multiple Choice Questions number 88 to 90. Each question has 4 choices (A), (B), (C) and (D), out of which **ONLY ONE** is correct.*

88. The process by which a liquid changes to its solid form  
(A) Evaporation (B) Solidification  
(C) Condensation (D) None of these
89. Which of the following rocks contains calcium?  
(A) Granite (B) Obsidian  
(C) Limestone (D) Shale
90. Which of these may cause fire?  
(A) Burning matches (B) Electrical faults  
(C) Gas leaks (D) All of these

*Space for Rough Work*

SAMPLE PAPER

## MATHEMATICS – (PART – C)

This part contains 3 Multiple Choice Questions number 91 to 93. Each question has 4 choices (A), (B), (C) and (D), out of which **ONLY ONE** is correct.

91. What will be the sum of  $\frac{7}{12}$  and  $\frac{3}{12}$
- (A)  $\frac{10}{13}$  (B)  $\frac{4}{9}$   
(C)  $\frac{8}{12}$  (D)  $\frac{5}{6}$
92. 0.04 is equal to
- (A)  $\frac{1}{4}$  (B)  $\frac{1}{7}$   
(C)  $\frac{1}{25}$  (D) all
93. The sum of two angles of a triangle is equal to its 3<sup>rd</sup> angle. Find the 3<sup>rd</sup> angle.
- (A) 90° (B) 30°  
(C) 60° (D) 45°

Space for Rough Work

## BIOLOGY – (PART – D)

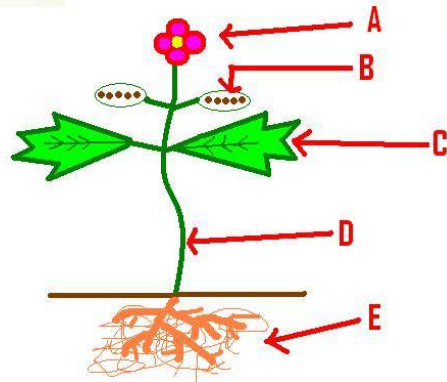
This part contains 3 Multiple Choice Questions number 94 to 96. Each question has 4 choices (A), (B), (C) and (D), out of which **ONLY ONE** is correct.

94. Which food item has calcium?

- (A) Honey  
(B) Milk  
(C) Sugar  
(D) Potato

95. What part of the plant is marked as A in the given figure?

- (A) Flower  
(B) Stem  
(C) Roots  
(D) Leaves



96. Study the table given below. Which of these is incorrectly matched?

	Animal	Outer Covering
(A)	polar bear	Fur
(B)	leopard	Feather
(C)	Turtle	Shell
(D)	snake	Scales

Space for Rough Work

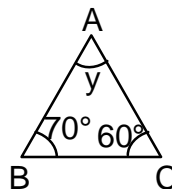
## Recommended Time: 30 Minutes for Section – V

### Section – V

## MATHEMATICS – (PART – A)

This part contains 6 Multiple Choice Questions number 97 to 102. Each question has 4 choices (A), (B), (C) and (D), out of which **ONLY ONE** is correct.

97. Find the area of circle, whose radius is 7 cm  $\left(\pi = \frac{22}{7}\right)$   
 (A) 156 cm<sup>2</sup> (B) 154 cm<sup>2</sup>  
 (C) 157 cm<sup>2</sup> (D) 158 cm<sup>2</sup>
98. Cost price of an object is Rs 1280 and selling price of that object is Rs 1260. What is profit/loss?  
 (A) profit = Rs 20 (B) loss = Rs 20  
 (C) profit = Rs 40 (D) loss = Rs 40
99. Find  $4\frac{2}{5} - 2\frac{1}{5}$   
 (A)  $1\frac{1}{4}$  (B)  $3\frac{1}{5}$   
 (C)  $2\frac{1}{5}$  (D)  $3\frac{1}{4}$
100. 11.35 is read as  
 (A) eleven point three five (B) eleven point fifty three  
 (C) eleven point five three (D) none
101. Find the following as 130% of 20 kg  
 (A) 26 (B) 25  
 (C) 24 (D) all
102. In the given figure  $\angle B = 70^\circ$  and  $\angle C = 60^\circ$ . Find  $\angle A$   
 (A)  $50^\circ$   
 (B)  $80^\circ$   
 (C)  $70^\circ$   
 (D)  $60^\circ$



Space for Rough Work

## MATHEMATICS – (PART – B)

---

*This part contains 6 Numerical Based Questions number 103 to 108. Each question has Single Digit Answer 0 to 9.*

---

103. If the circumference of a circle with radius 2 cm is  $n\pi$ , find the value of  $n$ .
104. What percent of 500 is 30?
105. If the angles of a triangle are  $10x$ ,  $15x$  and  $20x$ , find the value of  $x$ .
106. Find the average of 1, 3, 6, 8, 12.
107. 2 kg of rice is bought for Rs 100 per kg. If 1 kg is sold at Rs 118 per kg and the rest is sold at Rs 100 per kg, what is the net profit percent?
108. What is the sum of  $1\frac{3}{9}$ ,  $2\frac{3}{9}$  and  $3\frac{3}{9}$ ?

---

*Space for Rough Work*

# FIITJEE SAMPLE PAPER – 2018

## (Big Bang Edge Test / Talent Recognition Exam)

for students presently in  
**Class 5 (Paper 1)**  
**ANSWERS**

1.	B	2.	D	3.	B	4.	B
5.	A	6.	A	7.	C	8.	D
9.	C	10.	A	11.	C	12.	D
13.	C	14.	C	15.	D	16.	A
17.	C	18.	B	19.	D	20.	B
21.	B	22.	B	23.	B	24.	D
25.	C	26.	D	27.	B	28.	D
29.	C	30.	D	31.	D	32.	D
33.	A	34.	B	35.	A	36.	D
37.	A	38.	D	39.	A	40.	B
41.	A	42.	A	43.	D	44.	B
45.	B	46.	A	47.	C	48.	D
49.	D	50.	B	51.	C	52.	C
53.	C	54.	B	55.	A	56.	C
57.	B	58.	A	59.	B	60.	B
61.	A	62.	D	63.	A	64.	A
65.	A	66.	B	67.	A	68.	B
69.	A	70.	A	71.	A	72.	A
73.	A	74.	C	75.	A	76.	A
77.	A	78.	D	79.	A	80.	C
81.	C	82.	D	83.	D	84.	D
85.	B	86.	A	87.	A	88.	B
89.	C	90.	D	91.	D	92.	C
93.	A	94.	B	95.	A	96.	B
97.	B	98.	B	99.	C	100.	A
101.	A	102.	A	103.	4	104.	6
105.	4	106.	6	107.	9	108.	7